

Hampshire Water Transfer and Water Recycling Project Environmental Statement – Figure 19.5 Catchment Abstraction Management Strategy

VOLUME NUMBER: 6

PLANNING INSPECTORATE SCHEME NUMBER: WA010002

APPLICATION DOCUMENT REFERENCE: 6.3

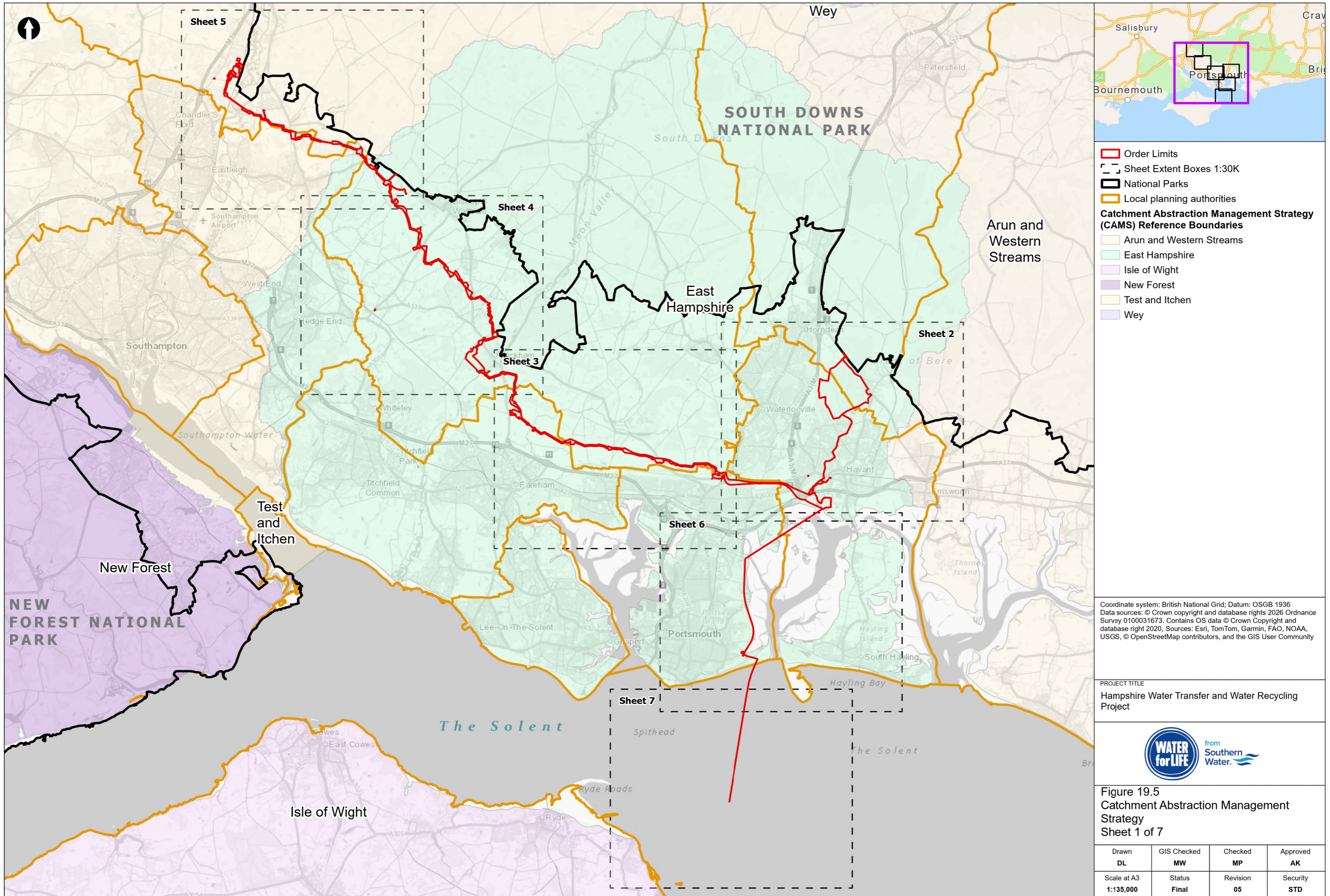
APFP REGULATION: 5(2)(a)

May 2026

Version 0



from
**Southern
Water** 



Coordinate system: British National Grid; Datum: OSGB 1936
 Data sources: © Crown copyright and database rights 2026 Ordnance Survey 0100031673. Contains OS data © Crown Copyright and database right 2020, Sources: Esri, TomTom, Garmin, FAO, NOAA, USGS, © OpenStreetMap contributors, and the GIS User Community

PROJECT TITLE
 Hampshire Water Transfer and Water Recycling Project

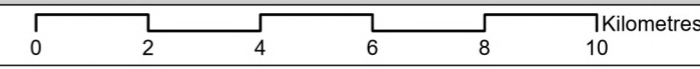


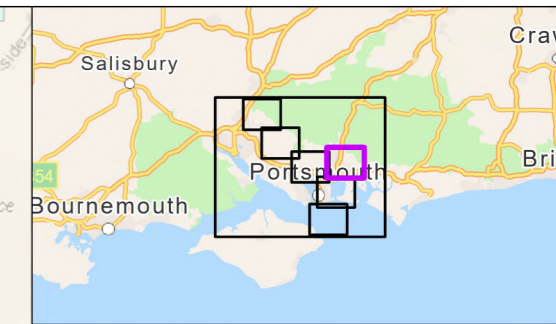
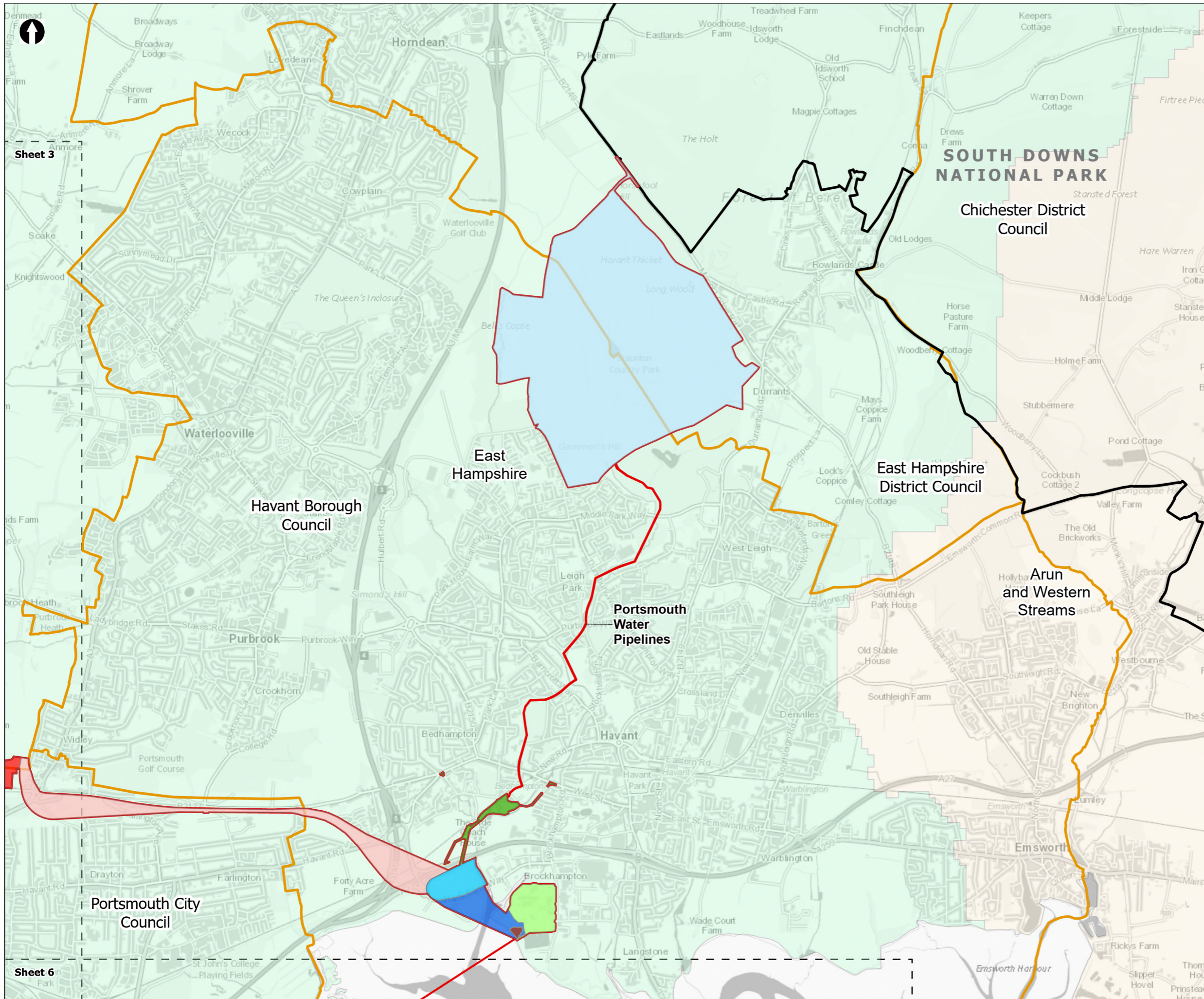
Figure 19.5
 Catchment Abstraction Management Strategy
 Sheet 1 of 7

Drawn DL	GIS Checked MW	Checked MP	Approved AK
Scale at A3 1:135,000	Status Final	Revision 05	Security STD

Drawing Number **PC5223-RHD-ES-ZZ-D-Z-0085**

© Southern Water 2026
 This document is issued for the party which commissioned it and for specific purposes connected with the captioned project only. It should not be relied upon by any other party or used for any other purpose.
 We accept no responsibility for the consequences of this document being relied upon by any other party, or being used for any other purpose, or containing any error or omission which is due to an error or omission in data supplied to us by other parties.





- Order Limits
- Sheet Extent Boxes 1:30K
- National Parks
- Local planning authorities
- Catchment Abstraction Management Strategy (CAMS) Reference Boundaries**
- Arun and Western Streams
- East Hampshire
- Proposed Development Components**
- Budds Farm Wastewater Treatment Works
- Limits of Deviation for Budds Farm Pumping Station
- Pipelines between the Water Recycling Plant site and Bedhampton Springs
- Water Recycling Plant site
- Pipelines between Budds Farm Wastewater Treatment Works and the Water Recycling Plant site
- Havant Thicket Reservoir
- Pipeline between the Water Recycling Plant site and Otterbourne Water Supply Works**
- Section D: The Water Recycling Plant site to Portsdown Hill
- Section E: Portsdown Hill to Boarhunt

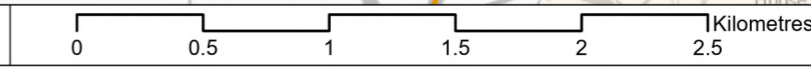
Coordinate system: British National Grid; Datum: OSGB 1936
 Data sources: © Crown copyright and database rights 2026 Ordnance Survey 0100031673. Contains OS data © Crown Copyright and database right 2020, Sources: Esri, TomTom, Garmin, FAO, NOAA, USGS, © OpenStreetMap contributors, and the GIS User Community

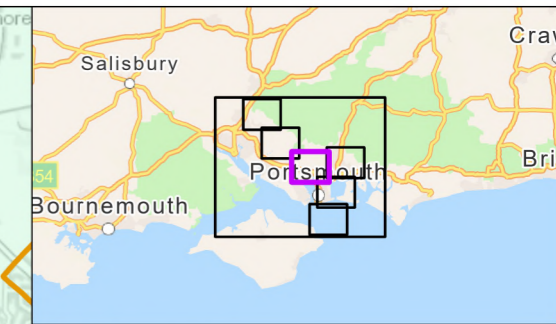
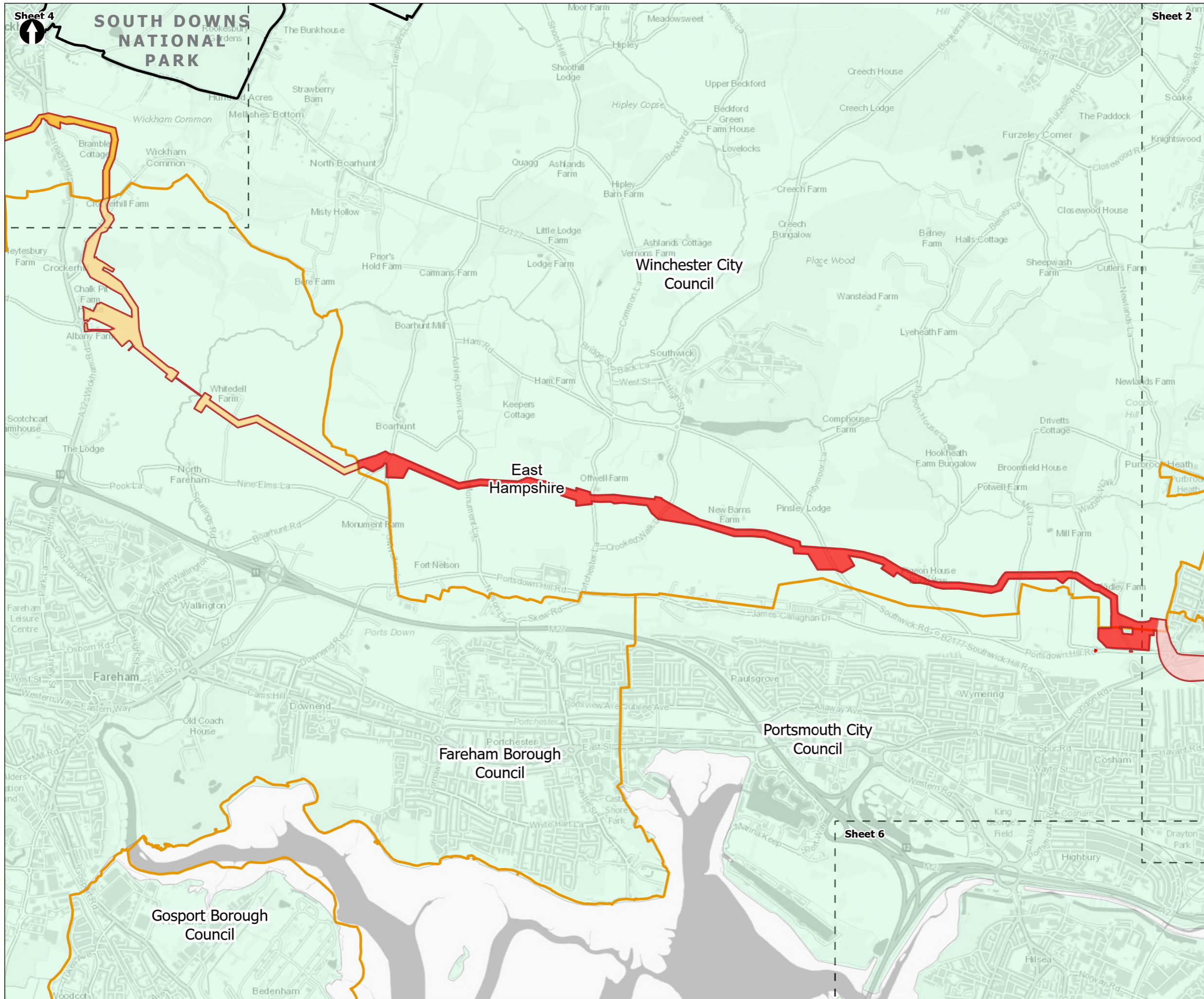
PROJECT TITLE
 Hampshire Water Transfer and Water Recycling Project



Figure 19.5
 Catchment Abstraction Management Strategy
 Sheet 2 of 7

Drawn DL	GIS Checked MW	Checked MP	Approved AK
Scale at A3 1:30,000	Status Final	Revision 05	Security STD





- Order Limits
 - Sheet Extent Boxes 1:30K
 - National Parks
 - Local planning authorities
- Catchment Abstraction Management Strategy (CAMS) Reference Boundaries**
- East Hampshire
- Pipeline between the Water Recycling Plant site and Otterbourne Water Supply Works**
- Section D: The Water Recycling Plant site to Portsdown Hill
 - Section E: Portsdown Hill to Boarhunt
 - Section F: Boarhunt to Crockerhill
 - Section G: Crockerhill to Wickham

Coordinate system: British National Grid; Datum: OSGB 1936
 Data sources: © Crown copyright and database rights 2026 Ordnance Survey 0100031673. Contains OS data © Crown Copyright and database right 2020, Sources: Esri, TomTom, Garmin, FAO, NOAA, USGS, © OpenStreetMap contributors, and the GIS User Community

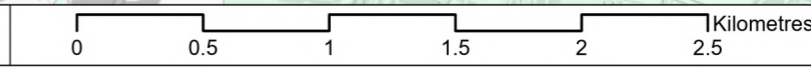
PROJECT TITLE
 Hampshire Water Transfer and Water Recycling Project

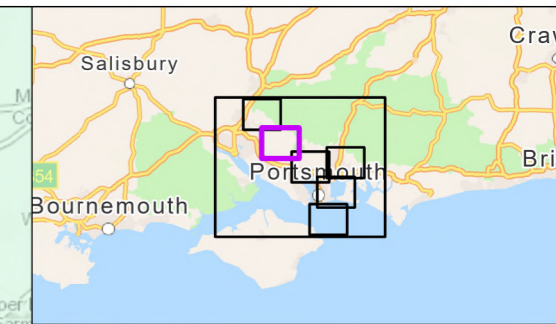
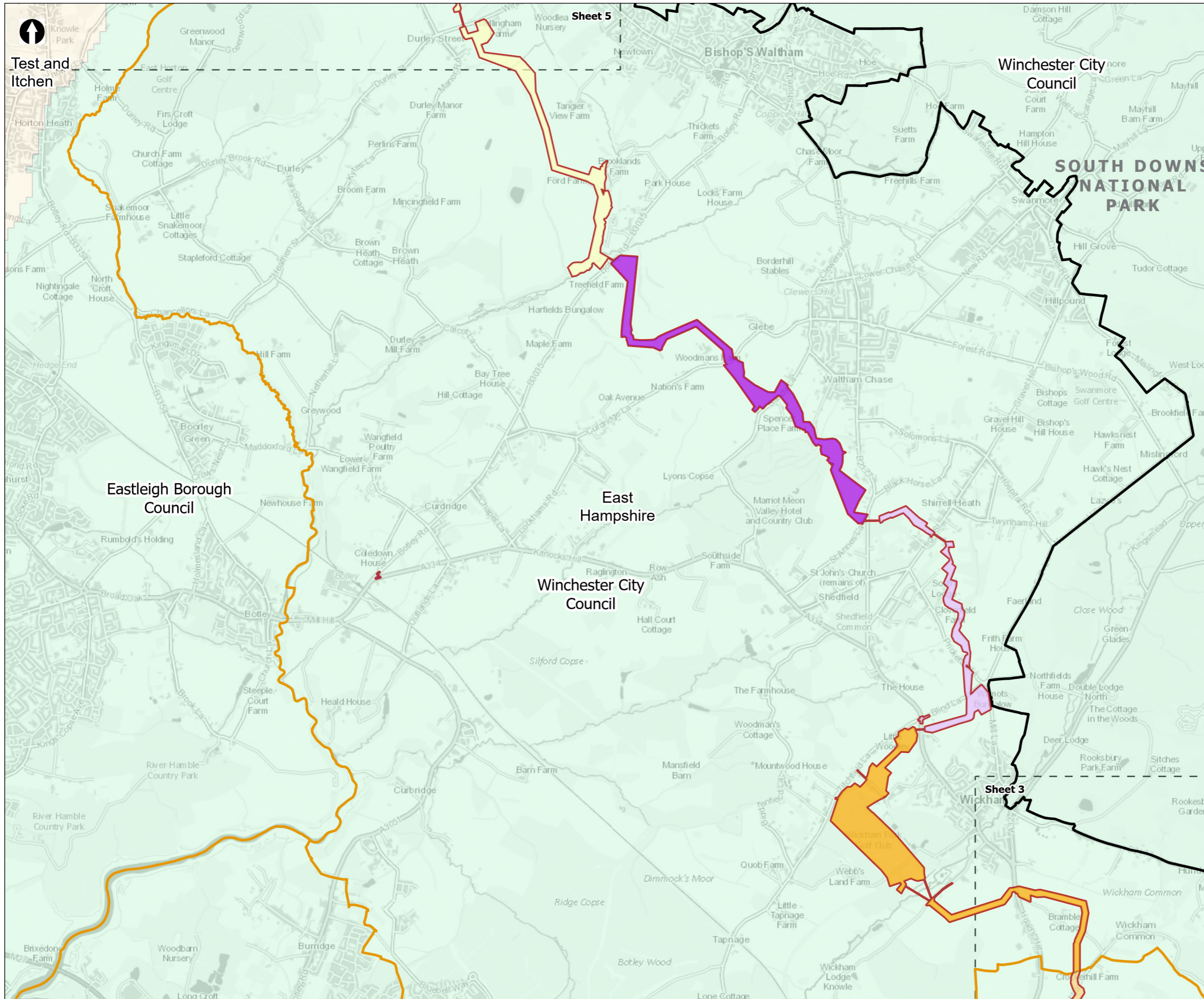


Figure 19.5
 Catchment Abstraction Management Strategy
 Sheet 3 of 7

Drawn DL	GIS Checked MW	Checked MP	Approved AK
Scale at A3 1:30,000	Status Final	Revision 05	Security STD

Drawing Number
PC5223-RHD-ES-ZZ-D-Z-0085





- Order Limits
 - Sheet Extent Boxes 1:30K
 - National Parks
 - Local planning authorities
- Catchment Abstraction Management Strategy (CAMS) Reference Boundaries**
- East Hampshire
 - Test and Itchen
- Pipeline between the Water Recycling Plant site and Otterbourne Water Supply Works**
- Section F: Boarhunt to Crockerhill
 - Section G: Crockerhill to Wickham
 - Section H: Wickham to Shedfield
 - Section J: Shedfield to the River Hamble
 - Section K: The River Hamble to Lower Upham

Coordinate system: British National Grid; Datum: OSGB 1936
 Data sources: © Crown copyright and database rights 2026 Ordnance Survey 0100031673. Contains OS data © Crown Copyright and database right 2020, Sources: Esri, TomTom, Garmin, FAO, NOAA, USGS, © OpenStreetMap contributors, and the GIS User Community

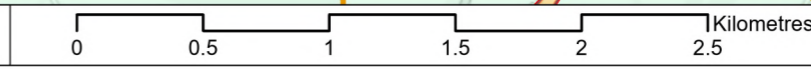
PROJECT TITLE
 Hampshire Water Transfer and Water Recycling Project



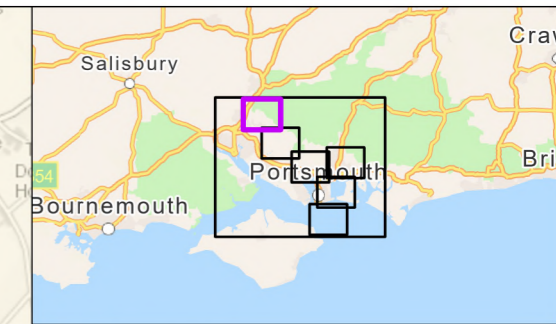
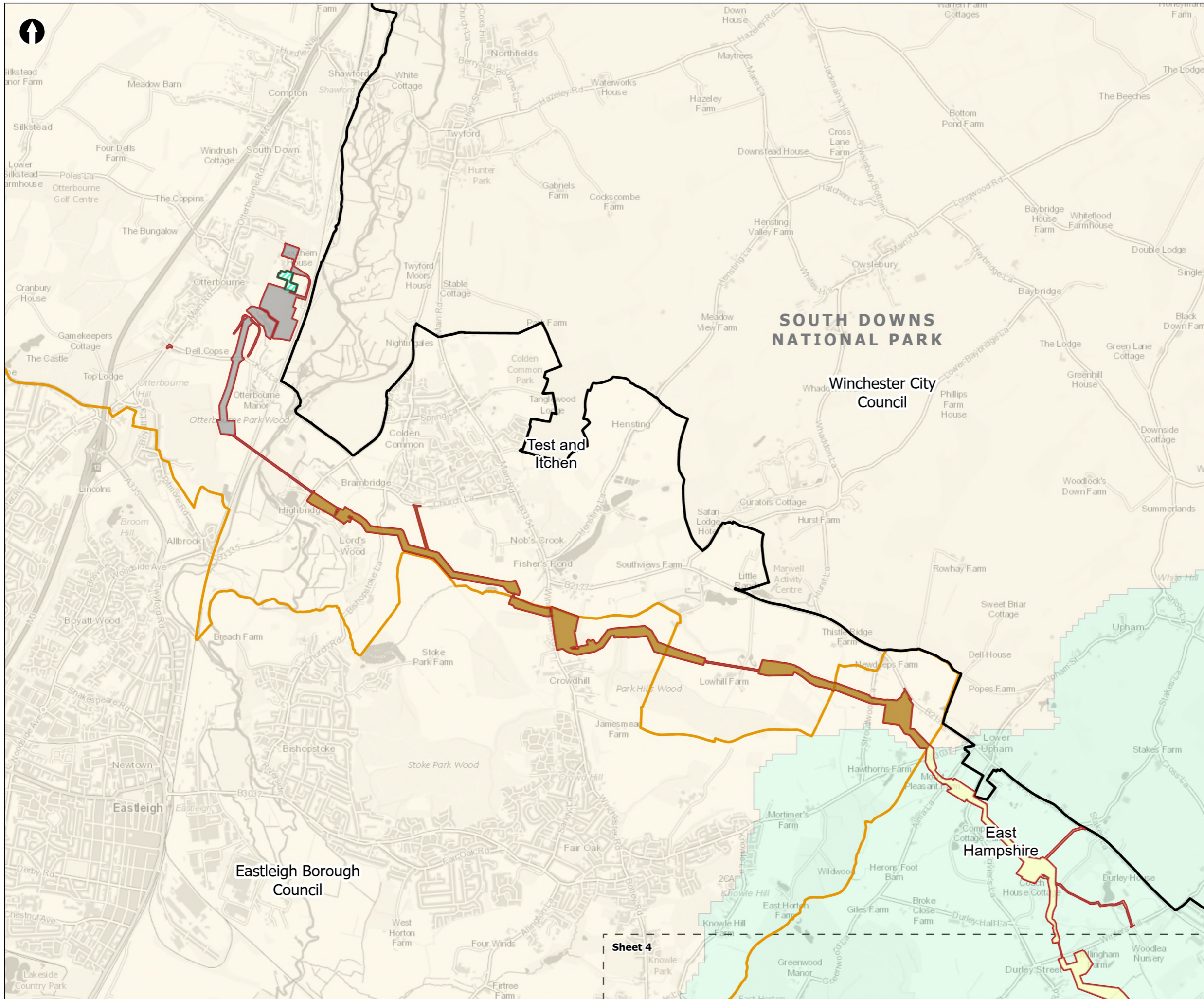
Figure 19.5
 Catchment Abstraction Management Strategy
 Sheet 4 of 7

Drawn DL	GIS Checked MW	Checked MP	Approved AK
Scale at A3 1:30,000	Status Final	Revision 05	Security STD

© Southern Water 2026
 This document is issued for the party which commissioned it and for specific purposes connected with the captioned project only. It should not be relied upon by any other party or used for any other purpose.
 We accept no responsibility for the consequences of this document being relied upon by any other party, or being used for any other purpose, or containing any error or omission which is due to an error or omission in data supplied to us by other parties.



Drawing Number
PC5223-RHD-ES-ZZ-D-Z-0085



Order Limits
 Sheet Extent Boxes 1:30K
 National Parks
 Local planning authorities

Catchment Abstraction Management Strategy (CAMS) Reference Boundaries
 East Hampshire
 Test and Itchen

Pipeline between the Water Recycling Plant site and Otterbourne Water Supply Works
 Section K: The River Hamble to Lower Upham
 Section L: Lower Upham to Brambridge
 Section M: Brambridge to Otterbourne Water Supply Works
 Limits of Deviation for Otterbourne INNS Treatment Plant

Coordinate system: British National Grid; Datum: OSGB 1936
 Data sources: © Crown copyright and database rights 2026 Ordnance Survey 0100031673. Contains OS data © Crown Copyright and database right 2020, Sources: Esri, TomTom, Garmin, FAO, NOAA, USGS, © OpenStreetMap contributors, and the GIS User Community

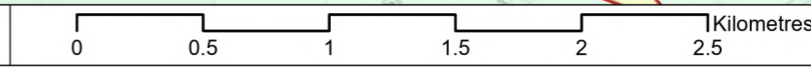
PROJECT TITLE
 Hampshire Water Transfer and Water Recycling Project

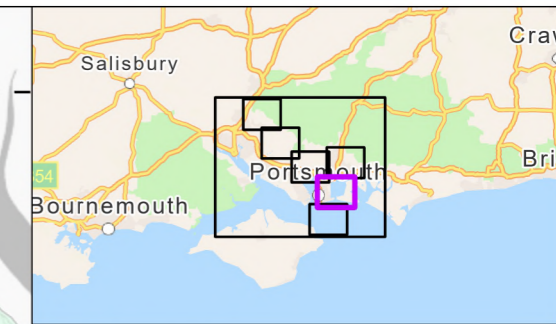
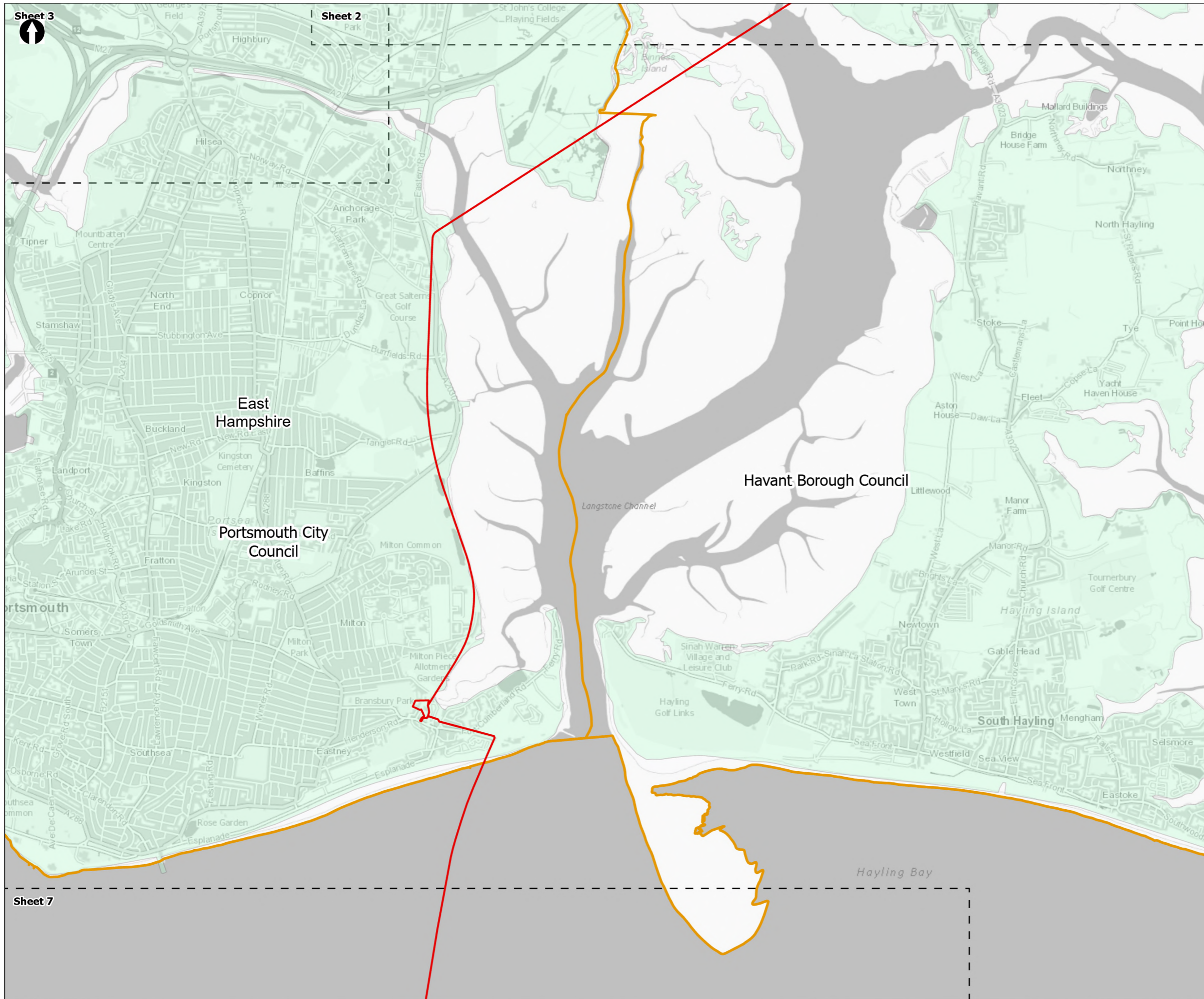


Figure 19.5
 Catchment Abstraction Management Strategy
 Sheet 5 of 7

Drawn DL	GIS Checked MW	Checked MP	Approved AK
Scale at A3 1:30,000	Status Final	Revision 05	Security STD

Drawing Number
PC5223-RHD-ES-ZZ-D-Z-0085





Order Limits
Sheet Extent Boxes 1:30K
Local planning authorities

Catchment Abstraction Management Strategy (CAMS) Reference Boundaries

East Hampshire

Coordinate system: British National Grid; Datum: OSGB 1936
 Data sources: © Crown copyright and database rights 2026 Ordnance Survey 0100031673. Contains OS data © Crown Copyright and database right 2020. Sources: Esri, TomTom, Garmin, FAO, NOAA, USGS, © OpenStreetMap contributors, and the GIS User Community

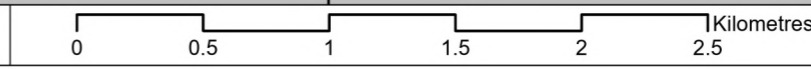
PROJECT TITLE
 Hampshire Water Transfer and Water Recycling Project



Figure 19.5
 Catchment Abstraction Management Strategy
 Sheet 6 of 7

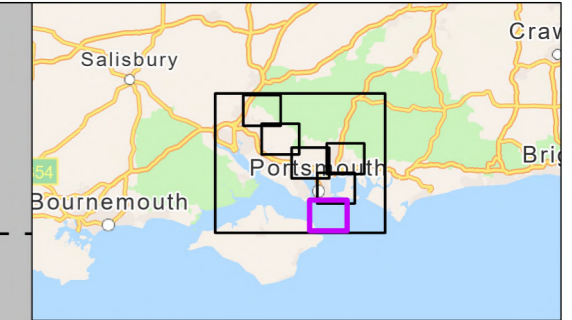
Drawn DL	GIS Checked MW	Checked MP	Approved AK
Scale at A3 1:30,000	Status Final	Revision 05	Security STD

Drawing Number
PC5223-RHD-ES-ZZ-D-Z-0085



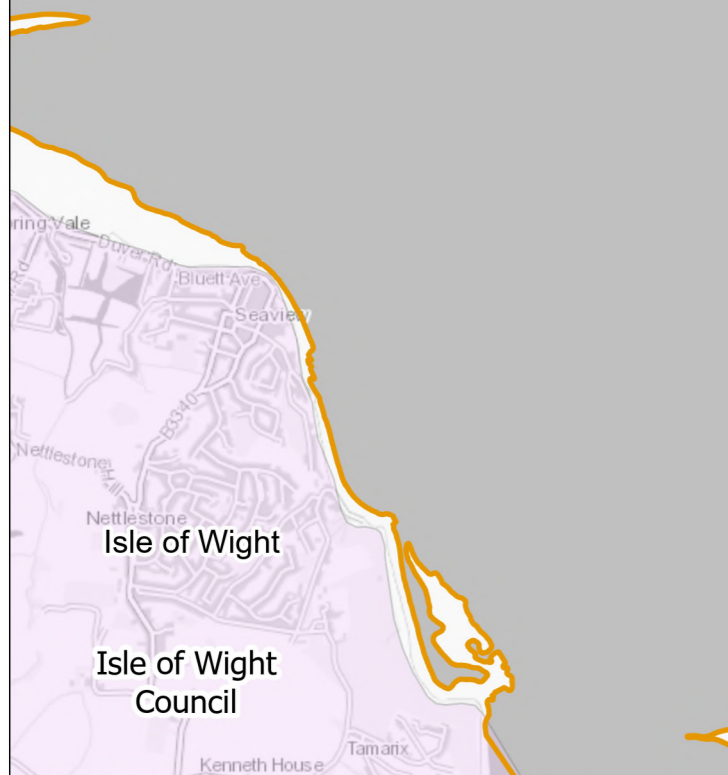


Sheet 6



- Order Limits
 - Sheet Extent Boxes 1:30K
 - Local planning authorities
- Catchment Abstraction Management Strategy (CAMS) Reference Boundaries**
- Isle of Wight

Spithead



Coordinate system: British National Grid; Datum: OSGB 1936
 Data sources: © Crown copyright and database rights 2026 Ordnance Survey 0100031673. Contains OS data © Crown Copyright and database right 2020. Sources: Esri, TomTom, Garmin, FAO, NOAA, USGS, © OpenStreetMap contributors, and the GIS User Community

PROJECT TITLE
 Hampshire Water Transfer and Water Recycling Project



Figure 19.5
 Catchment Abstraction Management Strategy
 Sheet 7 of 7

Drawn DL	GIS Checked MW	Checked MP	Approved AK
Scale at A3 1:30,000	Status Final	Revision 05	Security STD

